

4

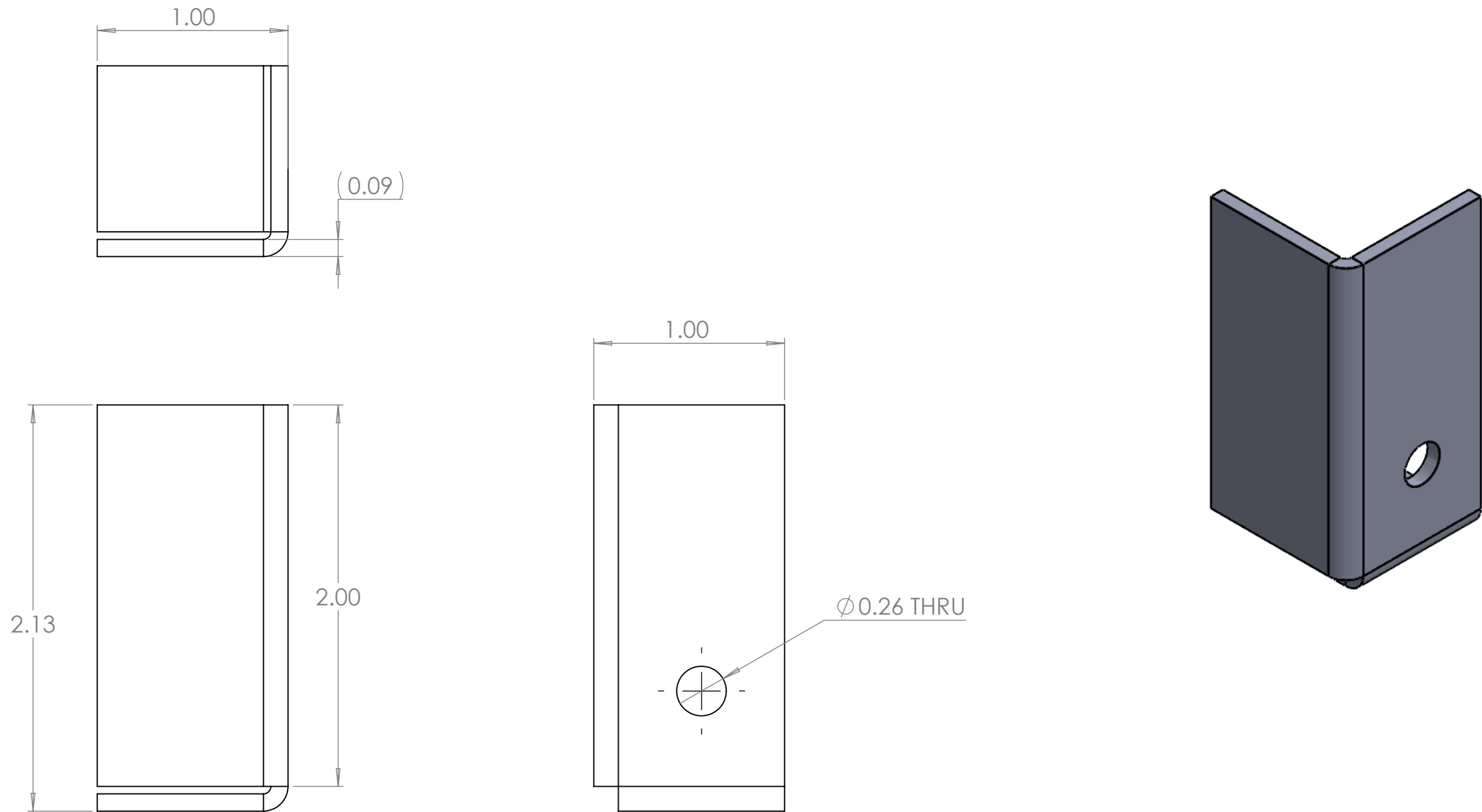
3

2

1

B

B



A


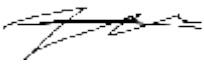
A

NOTES: UNLESS OTHERWISE SPECIFIED.

1. PARAMETRIC MODEL. ALL DIMENSIONS FURTHER SPECIFIED IN 003-00006.
2. FLAT PATTERN FOR PART SPECIFIED ON LAST SHEET OF DRAWING.
3. PART SHALL BE FREE OF ANY SHARP EDGES AND BURRS.
4. PART TO BE CLEANED OF ALL OIL AND DEBRIS.
5. MATERIAL: A1008 STEEL
6. FINISH: NONE
7. GAUGE: 13
8. PART SHALL NOT BE MODIFIED BY ANY PARTY OUTSIDE PAPERLESS PARTS, INC UNLESS WRITTEN OR EXPRESS APPROVAL HAS BEEN PERMITTED FOR THE PART.

PROPRIETARY AND CONFIDENTIAL

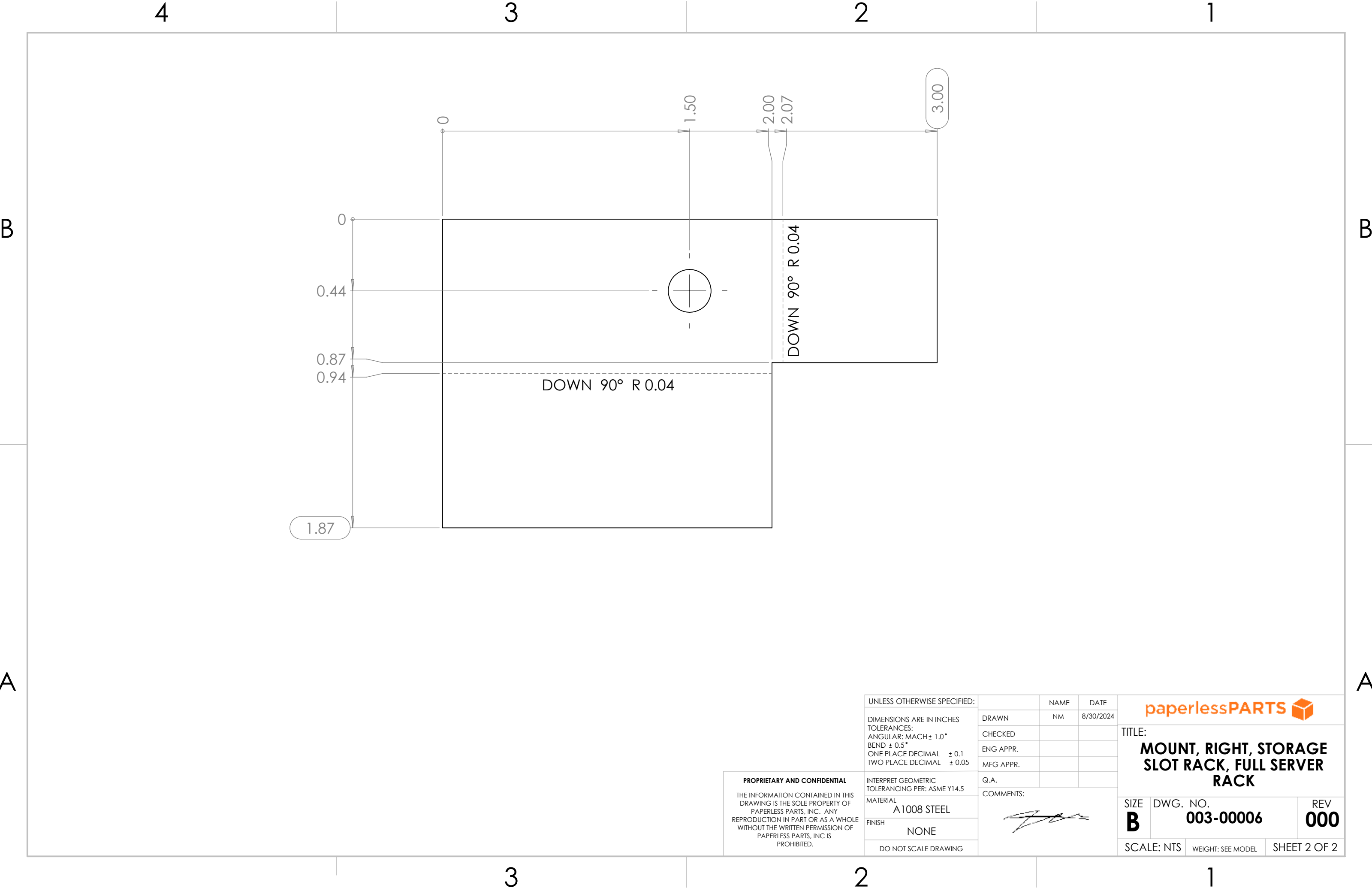
THE INFORMATION CONTAINED IN THIS DRAWING IS THE SOLE PROPERTY OF PAPERLESS PARTS, INC. ANY REPRODUCTION IN PART OR AS A WHOLE WITHOUT THE WRITTEN PERMISSION OF PAPERLESS PARTS, INC IS PROHIBITED.

UNLESS OTHERWISE SPECIFIED:		NAME	DATE	<div></div> <div>TITLE: MOUNT, RIGHT, STORAGE SLOT RACK, FULL SERVER RACK</div>	
DIMENSIONS ARE IN INCHES		DRAWN	NM		
TOLERANCES:		CHECKED			
ANGULAR: MACH ± 1.0°		ENG APPR.			
BEND ± 0.5°		MFG APPR.		<div>Q.A.</div> <div>COMMENTS: </div>	
ONE PLACE DECIMAL ± 0.1					
TWO PLACE DECIMAL ± 0.05					
MATERIAL		A1008 STEEL		SIZE	DWG. NO.
FINISH		NONE		B	003-00006
DO NOT SCALE DRAWING				SCALE: NTS	REV
				WEIGHT: SEE MODEL	000
				SHEET 1 OF 2	


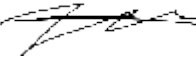
3

2

1



PROPRIETARY AND CONFIDENTIAL
THE INFORMATION CONTAINED IN THIS
DRAWING IS THE SOLE PROPERTY OF
PAPERLESS PARTS, INC. ANY
REPRODUCTION IN PART OR AS A WHOLE
WITHOUT THE WRITTEN PERMISSION OF
PAPERLESS PARTS, INC IS
PROHIBITED.

UNLESS OTHERWISE SPECIFIED:		NAME	DATE	<div></div>		
DIMENSIONS ARE IN INCHES TOLERANCES: ANGULAR: MACH ± 1.0° BEND ± 0.5° ONE PLACE DECIMAL ± 0.1 TWO PLACE DECIMAL ± 0.05		DRAWN	NM	8/30/2024	TITLE: MOUNT, RIGHT, STORAGE SLOT RACK, FULL SERVER RACK	
INTERPRET GEOMETRIC TOLERANCING PER: ASME Y14.5		CHECKED				
MATERIAL		ENG APPR.				
FINISH		MFG APPR.				
A1008 STEEL		Q.A.				
NONE		COMMENTS:			SIZE	
DO NOT SCALE DRAWING					DWG. NO.	
					REV	
					003-00006	
					000	
					SCALE: NTS	
					WEIGHT: SEE MODEL	
					SHEET 2 OF 2	